

ALBANY POLICE DEPARTMENT CRIME ANALYSIS

“Combating Crime and Protecting Lives”

Prepared By the Crime Analysis Unit of The Albany Police Department

****These numbers may be updated from month to month as records updates occur****

2013

Month of November

Distribution: CITY MANAGER, ASST. CITY MANAGERS

CHIEF OF POLICE
DEPUTY CHIEF - INVESTIGATIVE
DEPUTY CHIEF – UNIFORM
DEPUTY CHIEF – SUPPORT SERVICES
MAJOR - INTERNAL AFFAIRS
INVESTIGATIONS CAPTAINS
UNIFORM CAPTAINS
ACCREDITATION MANAGER

SPECIAL OPERATIONS CAPT.
FAMILY PROTECTION
RECORDS SUPERVISOR
PLANNING & RESEARCH
TRAINING SUPERVISOR
CHIEF'S ADMIN ASSISTANT
SUPPORT SERVICES LT

***Information Included in this Report Reflects
Compliance with UCR Reporting Standards**

The information contained in this report is primarily raw data until calendar year reporting.

Please contact David Sparks, APD Crime Analyst for questions regarding this report @ 431-2878.

Monthly Part I Crimes

Albany Police Department

Part I Crimes Committed During the Month of November 2013 with Comparisons of November 2012 & 2011

Actual Offenses	2013 2012 Month to Month		+/- Change		2013 2011 Month to Month		+/- Change	
Offenses Committed	November 2013	November 2012	#	%	November 2013	November 2011	#	%
Homicide	0	0	0	*NC	0	0	0	*NC
Rape	1	1	0	0.00	1	2	-1	-50.00
Robbery	16	16	0	0.00	16	19	-3	-15.79
Aggravated Assault	50	36	14	38.89	50	48	2	4.17
Violent Crime Total	67	53	14	26.42	67	69	-2	-2.90
Arson	0	2	-2	-100.00	0	1	-1	-100.00
Burglary	124	95	29	30.53	124	99	25	25.25
Larceny	228	253	-25	-9.88	228	252	-24	-9.52
Auto Theft	18	16	2	12.50	18	20	-2	-10.00
Property Crime Total	370	366	4	1.09	370	372	-2	-0.54
Crime Trend Total	437	419	18	4.30	437	441	-4	-0.91

Part I Case Clearances During the Month of November 2013 with Comparisons of November 2012 & 2011

	2013	2012	2011	2013	2012	2011
Offenses Cleared	November # Cleared	November # Cleared	November # Cleared	November % Cleared	November % Cleared	November % Cleared
Homicide	0	0	0	*NC	*NC	*NC
Rape	0	3	1	0.00%	300.00%	50.00%
Robbery	6	4	4	37.50%	25.00%	21.05%
Aggravated Assault	22	12	20	44.00%	33.33%	41.67%
Violent Crime Cleared	28	19	25	41.79%	35.85%	36.23%
Arson	0	0	0	*NC	0.00%	0.00%
Burglary	9	6	5	7.26%	6.32%	5.05%
Larceny	44	43	46	19.30%	17.00%	18.25%
Auto Theft	1	3	5	5.56%	18.75%	25.00%
Property Crime Cleared	54	52	56	14.59%	14.21%	15.05%
Clearance Total	82	71	81	18.76%	16.95%	18.37%

* The Crime Trend and Clearance Totals do not include percentages for numbers not divisible by 0.

Year to Date Part I Crimes

Albany Police Department

Part I Crimes Committed Year-to-date as of November 2013 with Comparisons of November 2012 & 2011								
Actual Offenses	2013 Year to Date	2012 Year to Date	+/- Change			2013 Year to Date	2011 Year to Date	+/- Change
	November 2013	November 2012	#	%		November 2013	November 2011	# %
Offenses Committed								
Homicide	7	4	3	75.00		7	13	-6 -46.15
Rape	17	24	-7	-29.17		17	35	-18 -51.43
Robbery	162	201	-39	-19.40		162	162	0 0.00
Aggravated Assault	492	528	-36	-6.82		492	393	99 25.19
Violent Crime Total	678	757	-79	-10.44		678	603	75 12.44
Arson	19	16	3	18.75		19	15	4 26.67
Burglary	1175	1316	-141	-10.71		1175	1180	-5 -0.42
Larceny	2935	3103	-168	-5.41		2935	2904	31 1.07
Auto Theft	163	210	-47	-22.38		163	192	-29 -15.10
Property Crime Total	4292	4645	-353	-7.60		4292	4291	1 0.02
Crime Trend Total	4970	5402	-432	-8.00		4970	4894	76 1.55

Part I Case Clearances Year-to-date as of November 2013 with Comparisons of November 2012 & 2011						
2013		2012		2011		
Offenses Cleared	November # Cleared	November # Cleared	November # Cleared	2013 % Cleared	2012 % Cleared	2011 % Cleared
Homicide	5	3	12	71.43%	75.00%	92.31%
Rape	6	15	19	35.29%	62.50%	54.29%
Robbery	48	32	37	29.63%	15.92%	22.84%
Aggravated Assault	206	231	176	41.87%	43.75%	44.78%
Violent Crime Cleared	265	281	244	39.09%	37.12%	40.46%
Arson	7	3	1	36.84%	18.75%	6.67%
Burglary	146	127	206	12.43%	9.65%	17.46%
Larceny	573	618	473	19.52%	19.92%	16.29%
Auto Theft	35	39	29	21.47%	18.57%	15.10%
Property Crime Cleared	761	787	709	17.73%	16.94%	16.52%
Clearance Total	1026	1068	953	20.64%	19.77%	19.47%

* The Crime Trend and Clearance Totals do not include percentages for numbers not divisible by 0.

Monthly Part II and Other Crimes

Albany Police Department

Part II Crime Comparison of November 2013 Data with Previous Year/Month									
Part II Crimes	November 2013	November 2012	+/- #	Change %		November 2013	October 2013	+/- #	Change %
Disorderly Conduct	67	71	-4	-5.63		67	77	-10	-12.99
Domestic Violence	118	155	-37	-23.87		118	125	-7	-5.60
Disorderly w/intoxicated	0	0	0	*NC		0	0	0	*NC
D.U.I.	14	14	0	0.00		14	14	0	0.00
Child Molestation	1	4	-3	-75.00		1	2	-1	-50.00
Cruelty to Child	7	1	6	600.00		7	6	1	16.67
Child Protec: Curfew	0	0	0	*NC		0	0	0	*NC
Child Protec:Truancy	0	0	0	*NC		0	2	-2	-100.00
Interfere w/Custody	2	0	2	*NC		2	0	2	*NC
Child Abandonment	0	0	0	*NC		0	0	0	*NC
Enticing a Child	0	0	0	*NC		0	0	0	*NC
Forgery	10	17	-7	-41.18		10	23	-13	-56.52
Noise Ordinance Viol.	0	0	0	*NC		0	1	-1	-100.00
Harassing Phone Calls	7	9	-2	-22.22		7	9	-2	-22.22
Loitering	2	4	-2	-50.00		2	6	-4	-66.67
Missing Persons	21	38	-17	-44.74		21	16	5	31.25
Runaway	0	0	0	*NC		0	1	-1	-100.00
Suicide	0	1	-1	-100.00		0	0	0	*NC
Underage Poss./Consum.	2	2	0	0.00		2	1	1	100.00
Criminal Damage	20	32	-12	-37.50		20	19	1	5.26
Theft: Gas Drive Off	0	0	0	*NC		0	1	-1	-100.00
Simple Assault	5	8	-3	-37.50		5	9	-4	-44.44
Simple Battery	78	71	7	9.86		78	91	-13	-14.29
Battery	22	49	-27	-55.10		22	28	-6	-21.43
Obstruct/Hinder Police	37	14	23	164.29		37	58	-21	-36.21
Sexual Battery	3	2	1	50.00		3	2	1	50.00
Open Container	15	7	8	114.29		15	20	-5	-25.00
Sodomy	1	1	0	0.00		1	0	1	*NC
Statutory Rape	1	1	0	0.00		1	2	-1	-50.00
Saggy Pants	8	2	6	300.00		8	22	-14	-63.64
All Cases Not Listed	578	438	140	31.96		578	671	-93	-13.86
Total Part II Crime	1019	941	78	8.29		1019	1206	-187	-15.51

** The Crime Trend and Clearance Totals do not include percentages for numbers not able to be divided by 0.

Year to Date Part II and Other Crimes

Albany Police Department

Part II Crime Comparison of 2013 Year to Date with Previous Years 2012 & 2011									
Part II Crimes	November 2013	November 2012	+/- #	Change %		November 2013	November 2011	+/- #	Change %
Disorderly Conduct	826	873	-47	-5.38		826	739	87	11.77
Domestic Violence	1680	1825	-145	-7.95		1680	2103	-423	-20.11
Disorderly wh/intoxicated	0	0	0	*NC		0	4	-4	-100.00
D.U.I.	111	104	7	6.73		111	126	-15	-11.90
Child Molestation	35	48	-13	-27.08		35	45	-10	-22.22
Child Cruelty	42	45	-3	-6.67		42	46	-4	-8.70
Curfew	3	5	-2	-40.00		3	5	-2	-40.00
Truancy	3	6	-3	-50.00		3	11	-8	-72.73
Interfere w/Custody	10	9	1	11.11		10	8	2	25.00
Child Abandonment	0	0	0	*NC		0	0	0	*NC
Enticing a Child	1	6	-5	-83.33		1	1	0	0.00
Forgery	212	188	24	12.77		212	140	72	51.43
Noise Ordinance Viol.	1	5	-4	-80.00		1	6	-5	-83.33
Harassing Phone Calls	70	136	-66	-48.53		70	145	-75	-51.72
Loitering	39	36	3	8.33		39	26	13	50.00
Missing Persons	221	417	-196	-47.00		221	287	-66	-23.00
Runaway	7	7	0	0.00		7	8	-1	-12.50
Suicide	4	5	-1	-20.00		4	6	-2	-33.33
Underage Poss./Consum.	19	15	4	26.67		19	37	-18	-48.65
Criminal Damage	256	327	-71	-21.71		256	381	-125	-32.81
Theft: Gas Drive Off	11	26	-15	-57.69		11	29	-18	-62.07
Simple Assault	92	66	26	39.39		92	108	-16	-14.81
Simple Battery	921	915	6	0.66		921	975	-54	-5.54
Battery	320	389	-69	-17.74		320	360	-40	-11.11
Obstruction of Officer	307	213	94	44.13		307	159	148	93.08
Sexual Battery	21	21	0	0.00		21	27	-6	-22.22
Open Container	130	209	-79	-37.80		130	152	-22	-14.47
Sodomy	15	12	3	25.00		15	9	6	66.67
Statutory Rape	8	6	2	33.33		8	8	0	0.00
Saggy Pants	321	246	75	30.49		321	196	125	63.78
All Other Cases	6503	5857	646	11.03		6503	6117	386	6.31
Total Part II Crime	12189	12017	172	1.43		12189	12264	-75	-0.61

** The Crime Trend and Clearance Totals do not include percentages for numbers not able to be divided by 0.

Monthly Part I Crimes by District

Albany Police Department

November 2013

West Actual Offenses			
Offenses Committed	November 2013	October 2013	Year to Date 2013
Homicide	0	0	0
Rape	0	1	5
Robbery	4	3	33
Aggravated Assault	22	10	165
Violent Crime Total	26	14	203
Arson	0	0	2
Burglary	33	22	352
Larceny	79	100	1125
Auto Theft	3	5	53
Property Crime Tot.	115	127	1532
Crime Trend Total	141	141	1735

Central Actual Offenses			
Offenses Committed	November 2013	October 2013	Year to Date 2013
Homicide	0	0	4
Rape	1	1	7
Robbery	9	8	76
Aggravated Assault	24	35	197
Violent Crime Total	34	44	284
Arson	0	0	13
Burglary	49	40	353
Larceny	76	56	893
Auto Theft	8	2	53
Property Crime Tot.	133	98	1312
Crime Trend Total	167	142	1596

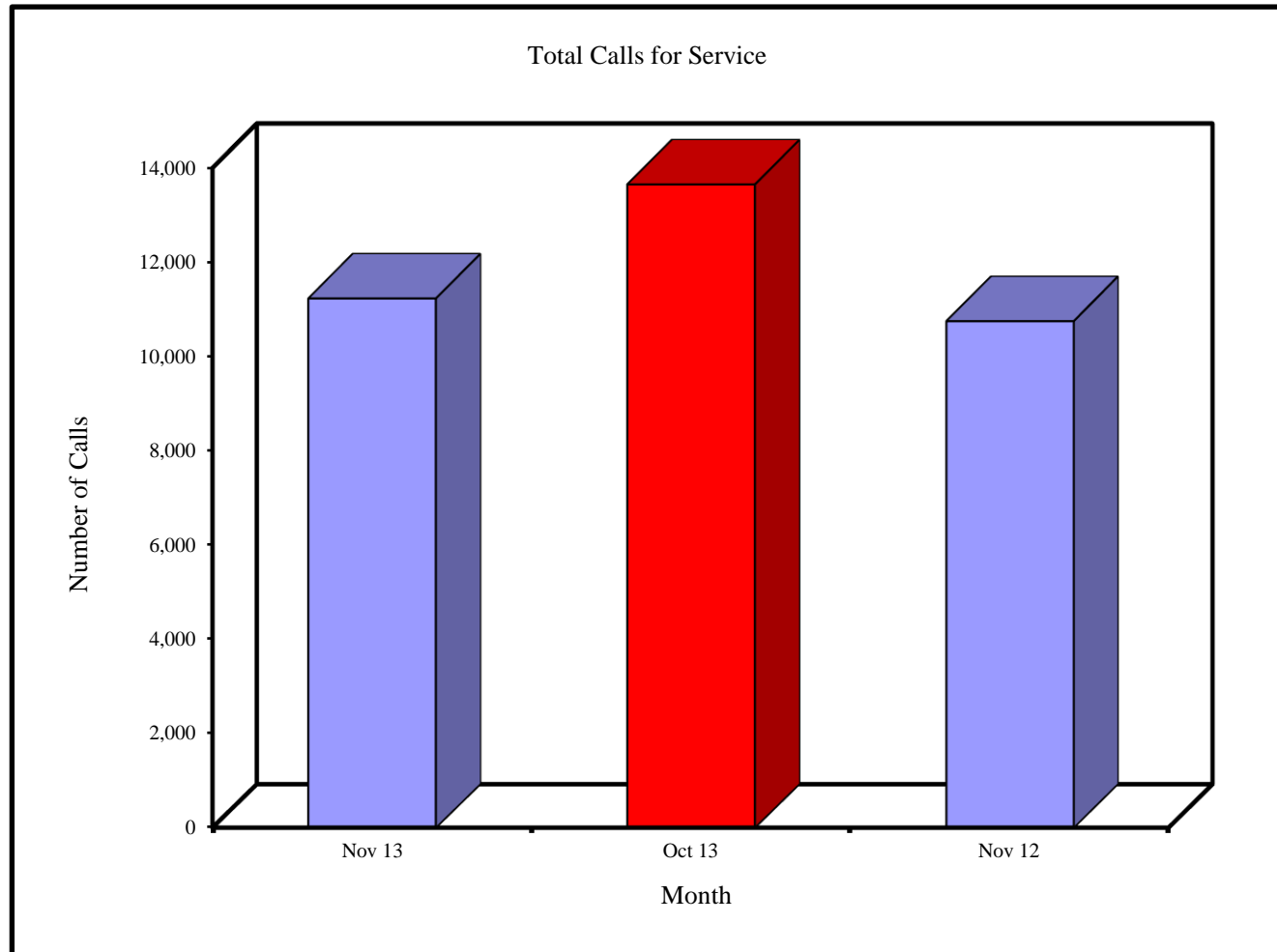
East Actual Offenses			
Offenses Committed	November 2013	October 2013	Year to Date 2013
Homicide	0	0	3
Rape	0	1	5
Robbery	3	12	53
Aggravated Assault	4	20	130
Violent Crime Total	7	33	191
Arson	0	1	4
Burglary	72	65	470
Larceny	73	59	917
Auto Theft	7	6	57
Property Crime Tot.	152	131	1448
Crime Trend Total	159	164	1639

Monthly Total Calls for Service

Albany Police Department

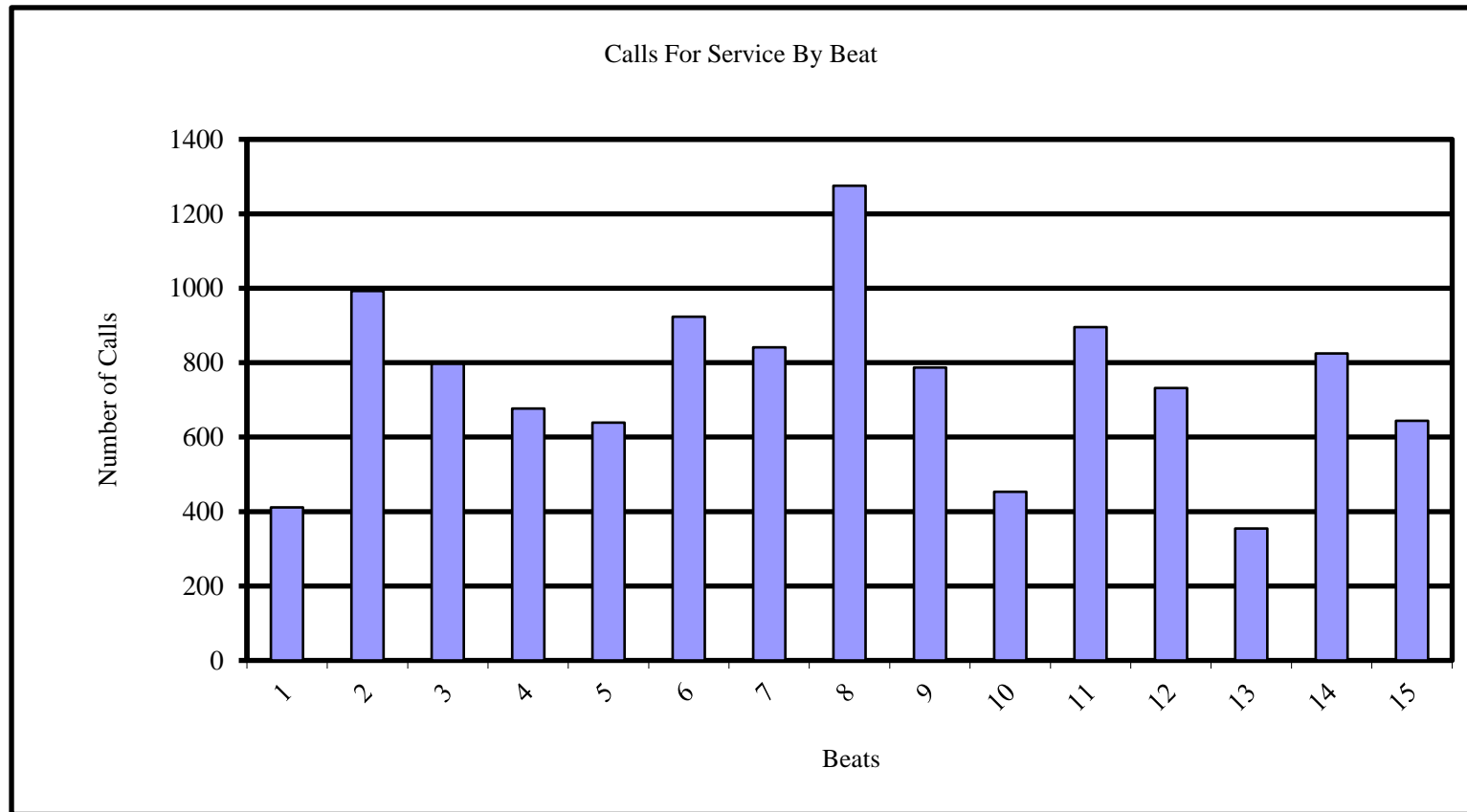
Total Calls For Service

Nov 13	Oct 13	Nov 12
11,245	13,653	10,766



Monthly Calls for Service by Beats

Albany Police Department

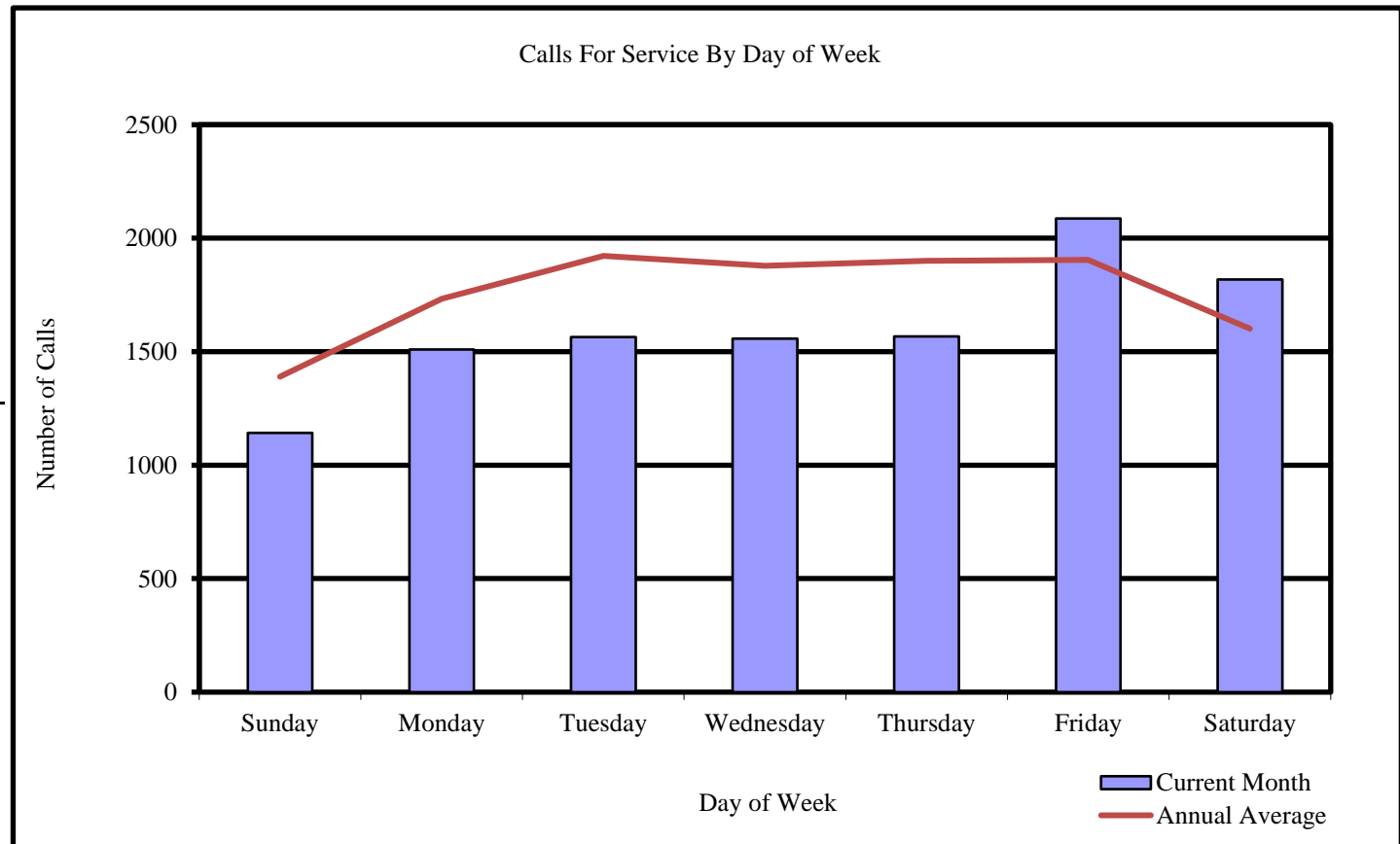


Beats	1	2	3	4	5	6	7	8	9	10	11	12	13	14	15
Calls in November 2013	411	992	797	677	639	923	841	1275	787	453	895	732	354	825	644

Monthly Calls for Service by Day of Week

Albany Police Department

<u>Calls For Service</u>	
Day	October 2013
Sunday	1142
Monday	1509
Tuesday	1564
Wednesday	1558
Thursday	1567
Friday	2087
Saturday	1818
	<hr/> 11245

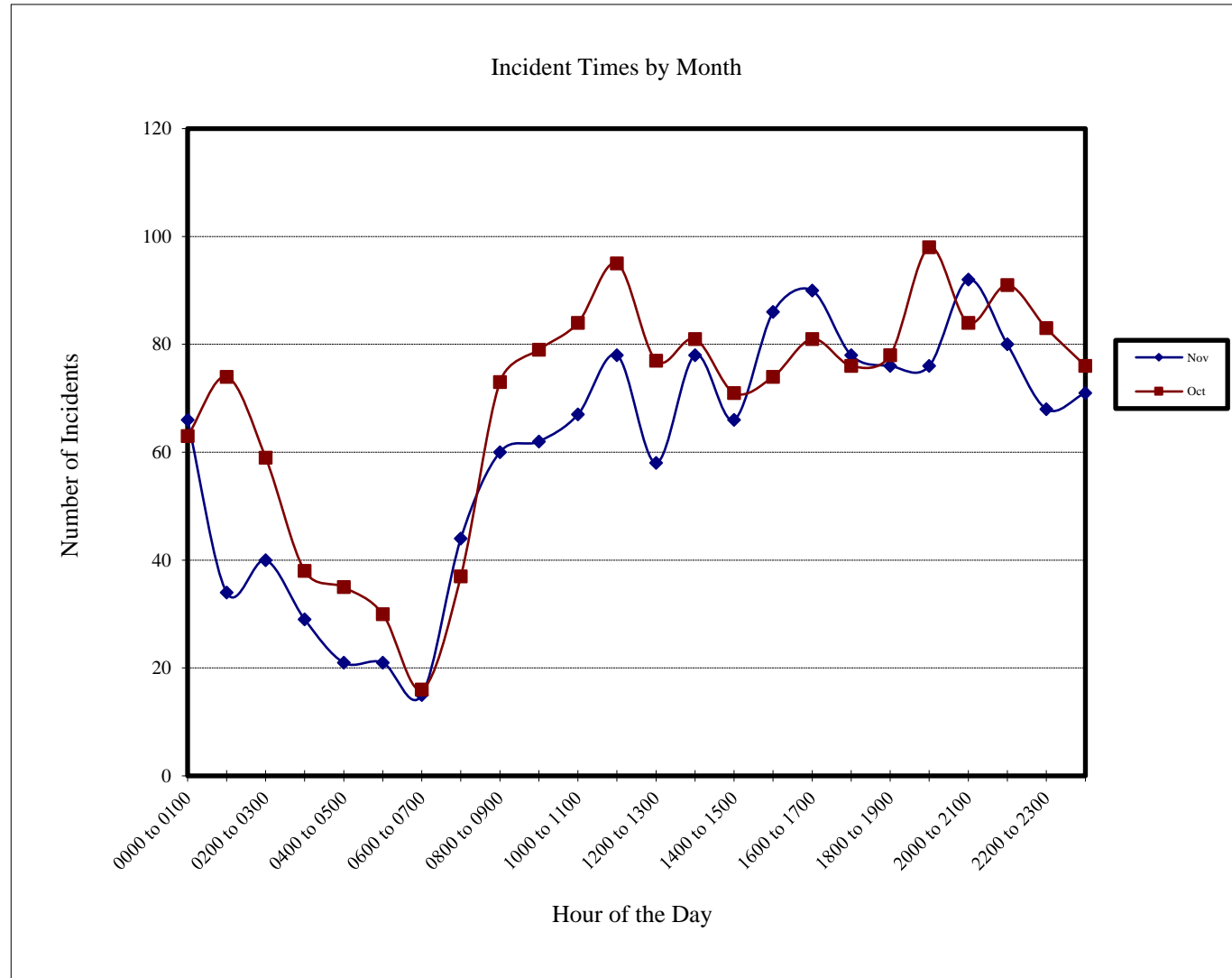


Incidents by Hour

Albany Police Department

Incident Times by Month

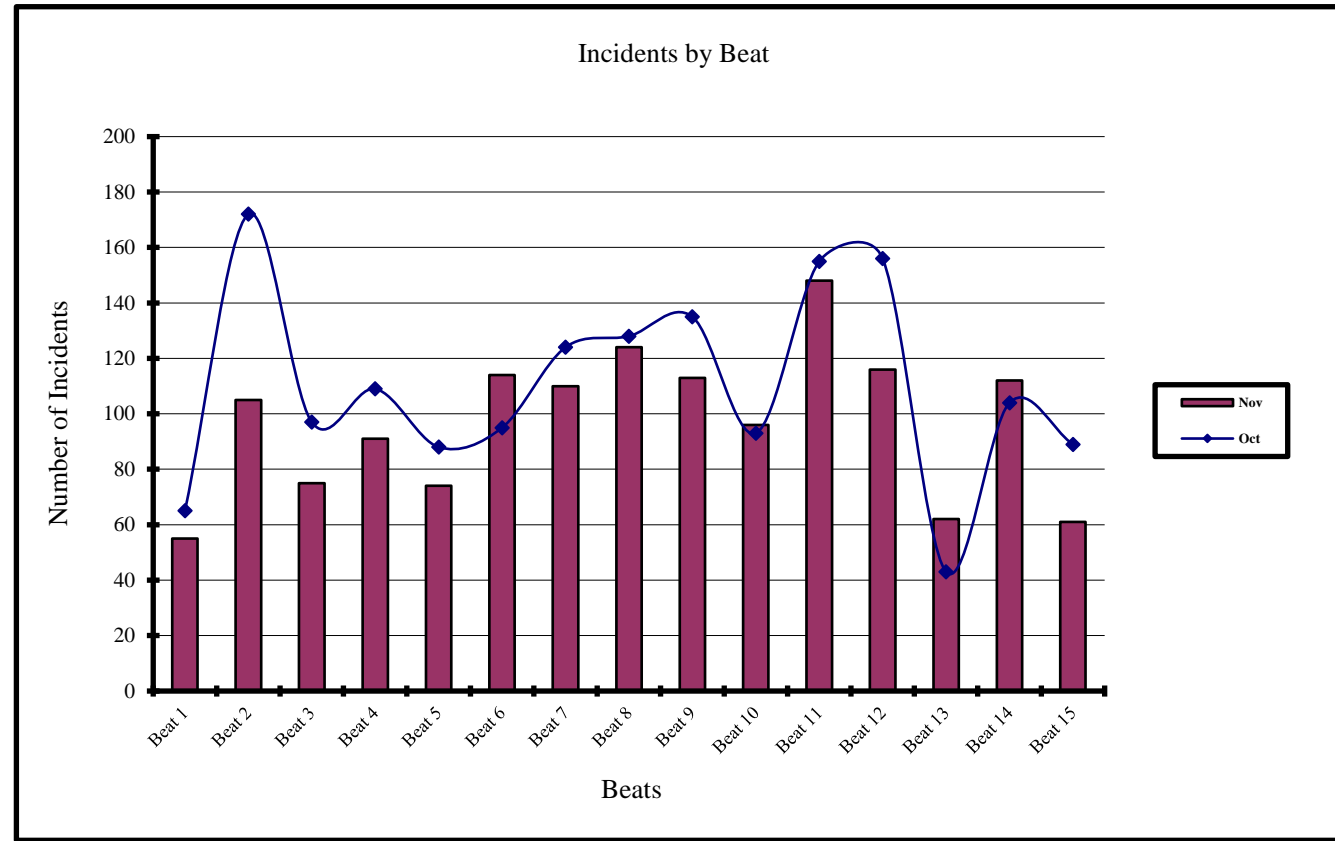
Hour of Day	Nov 2013	Oct 2013
0000 to 0100	66	63
0100 to 0200	34	74
0200 to 0300	40	59
0300 to 0400	29	38
0400 to 0500	21	35
0500 to 0600	21	30
0600 to 0700	15	16
0700 to 0800	44	37
0800 to 0900	60	73
0900 to 1000	62	79
1000 to 1100	67	84
1100 to 1200	78	95
1200 to 1300	58	77
1300 to 1400	78	81
1400 to 1500	66	71
1500 to 1600	86	74
1600 to 1700	90	81
1700 to 1800	78	76
1800 to 1900	76	78
1900 to 2000	76	98
2000 to 2100	92	84
2100 to 2200	80	91
2200 to 2300	68	83
2300 to 2400	71	76



Current and Previous Months Comparision of Incidents by Beat

Albany Police Department

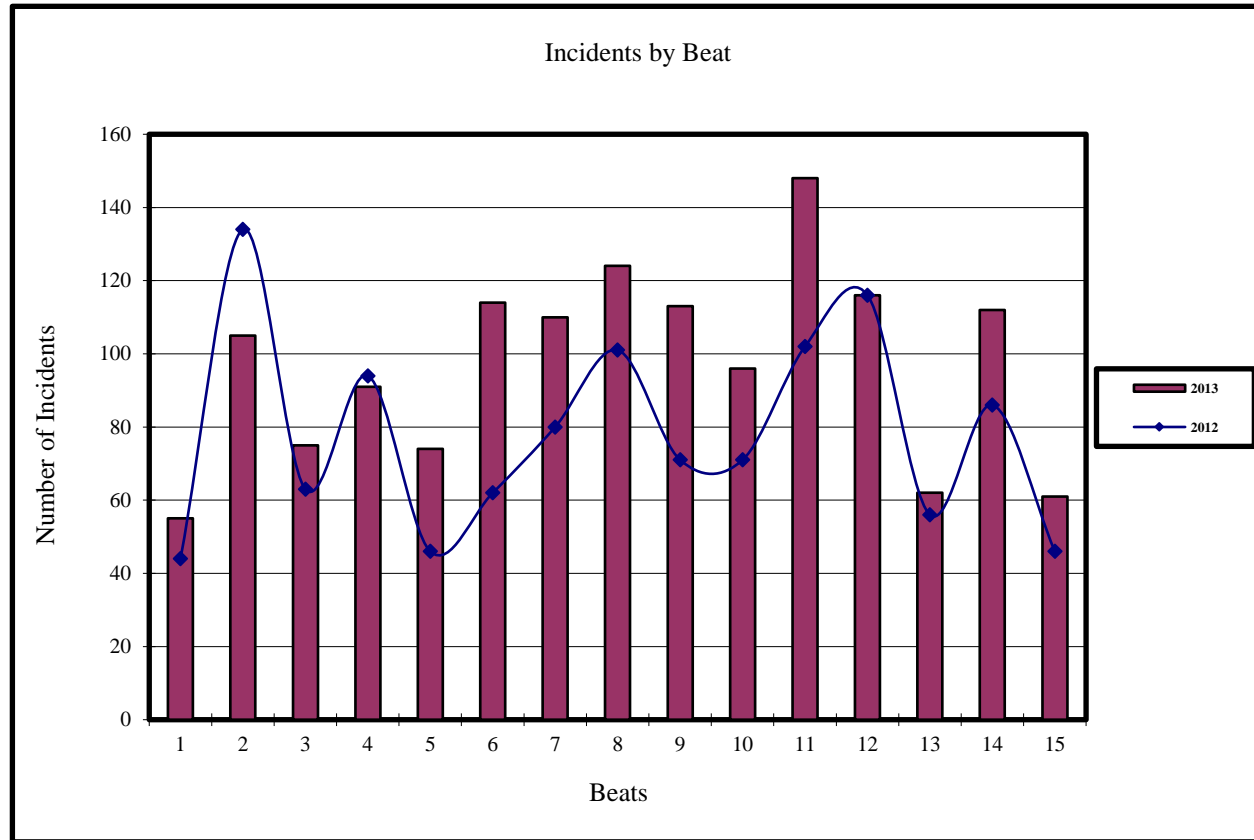
Beat	Incidents	
	Nov 2013	Oct 2013
Beat 1	55	65
Beat 2	105	172
Beat 3	75	97
Beat 4	91	109
Beat 5	74	88
Beat 6	114	95
Beat 7	110	124
Beat 8	124	128
Beat 9	113	135
Beat 10	96	93
Beat 11	148	155
Beat 12	116	156
Beat 13	62	43
Beat 14	112	104
Beat 15	61	89



Current and Previous Year Comparision of Incidents by Beat

Albany Police Department

Incidents		
Beat	Nov 2013	Nov 2012
Beat 1	55	44
Beat 2	105	134
Beat 3	75	63
Beat 4	91	94
Beat 5	74	46
Beat 6	114	62
Beat 7	110	80
Beat 8	124	101
Beat 9	113	71
Beat 10	96	71
Beat 11	148	102
Beat 12	116	116
Beat 13	62	56
Beat 14	112	86
Beat 15	61	46



Current and Previous Month Comparison of Monthly Incidents by Day of Week Albany Police Department

Incidents		
Day	Nov 2013	Oct 2013
Sunday	218	194
Monday	209	204
Tuesday	155	250
Wednesday	160	270
Thursday	177	251
Friday	253	238
Saturday	284	246

